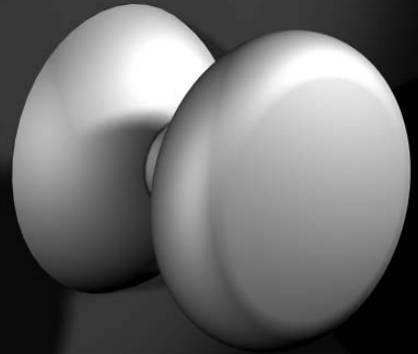
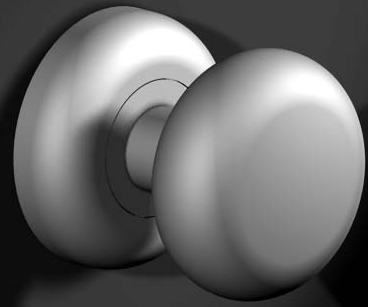
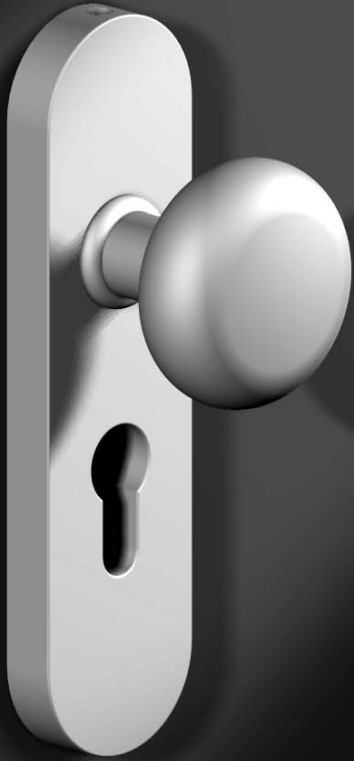
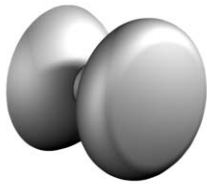


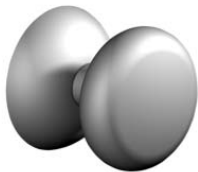
chant<sup>TM</sup>round



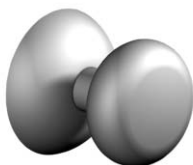
# chant<sup>TM</sup>round



Round 301 - 'A' Rose  
Door Knob  
Knob Diameter 70mm  
Rose Diameter 63mm  
Projection 65mm

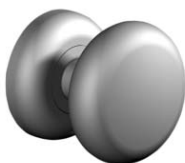


Round 302 - 'A' Rose  
Door Knob  
Knob Diameter 63mm  
Rose Diameter 63mm  
Projection 64mm



Round 303 - 'A' Rose  
Door Knob  
Knob Diameter 55mm  
Rose Diameter 63mm  
Projection 62mm

**Round 302 / 303 are available  
on the following rose types:**  
38F / 38R / 38S or  
41F / 41R / 41S  
F=Facet / R=Radius / S=Square



Round 302  
Door Knob  
Knob Diameter 63mm  
Rose Diameter 57mm  
Projection 64mm



Round 303  
Door Knob  
Knob Diameter 55mm  
Rose Diameter 57mm  
Projection 62mm

## The Round Range

Door knobs and escutcheons – designed for front doors and applications where a circular knob is required. This simple, elegant design can be used with a longer backset latch to become a feature of the door. The ability to separate the door knob and latch from the deadbolt and matching escutcheons allows for a variety of combinations to suit individual requirements.

### Features

- Internal spring mechanism ensures positive latch return
- Large bearing surface provides support for the solid knob
- High security through-door tie screw fixing
- Suitable for long back set tubular latches and mortice locks – as detailed
- Reversible door knobs aid handing
- Machined from solid brass or bronze

## Fixing Centres and Latch / Lock Types

### 301 / 302 / 303 Knobs on 'A' Rose

#### Fixing Centres:

50.8mm @ 45 degrees, visible fixing on inside rose

#### Lock / Latch Types:

- Tubular latches, 70mm backset or longer
- Legge 990 MF Series and Lockwood 3500 Series mortice locks, 88mm and 127mm backsets are recommended. With these locks, use Mason PM100, PM101, PM102 or *chant<sup>TM</sup> escutcheons*

### 302 / 303 Knobs on 38F / 38R / 38S Roses

#### Fixing Centres:

38mm vertical and horizontal, concealed fixing both sides

#### Lock / Latch Types:

- Profile cylinder mortice locks with nominal 38mm centres, light return springs and appropriate backset
- Legge 990 Series mortice lock, 88mm and 127mm backsets recommended
- Tubular latches – 70mm minimum backset recommended

### 302 / 303 Knobs on 41F / 41R / 41S Roses

#### Fixing Centres:

41mm vertical and horizontal, concealed fixing both sides

#### Lock / Latch Types:

- Lockwood 3500 Series mortice locks, 88mm and 127mm backsets recommended
- Tubular latches – 70mm minimum backset recommended

#### Spindle size:

- Spindle supplied: 7.6mm or 8mm
- Suitable for full and split spindle applications



Round 303 on 44mm Plate  
 Knob Diameter 55mm  
 Plate Width 44mm  
 Projection 63mm

*Refer chant™ technical to specify plate type within the following groups:*

Groups  
 410 and 420

Example shown: 421 Plate

## Round Knobs on Plates

Refer *chant™ technical* for plate options.

## Escutcheons

For matching escutcheons; refer to *chant™ escutcheons*.

## Finishes

Refer to *chant™ technical*, 'Product Finishes'.

## Specifying

*To specify (example)*

Knob	Rose/Plate Type	Finish	Quantity	Spindle Size
302	38F	SCP	2pr	8.0mm

It is recommended that the lock type is stated when ordering knobsets.

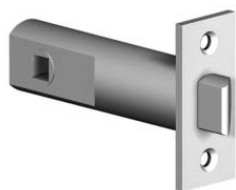


Round 303 on 44mm Plate  
 Knob Diameter 55mm  
 Plate Width 44mm  
 Projection 63mm

*Refer chant™ technical to specify plate type within the following groups:*

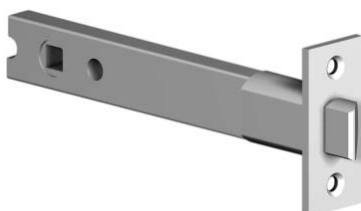
Groups  
 430 and 440  
 450 and 460

Example shown: 461 Plate



Tubular Latch 311  
 70mm Backset

Tubular Latch 312  
 127mm Backset



# chant<sup>TM</sup>round



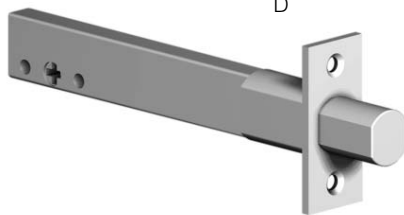
Cylinder Escutcheon  
A



Turn Assembly  
B



Deadbolt 60-70mm  
C



Deadbolt 127mm  
D



Rebate Packer  
E



Rebate Deadbolt Strike  
F



Rebate Latch Strike  
G

## Deadbolt Cylinder and Turn - 70mm, 321

*includes:*

- Cylinder Escutcheon A
- Turn Assembly B
- 60-70mm Backset Deadbolt C

## Deadbolt Cylinder and Turn - 127mm, 322

*includes:*

- Cylinder Escutcheon A
- Turn Assembly B
- 127mm Backset Deadbolt D

## Deadbolt Double Cylinder - 70mm, 331

*includes:*

- 2 x Cylinder Escutcheons A
- 60-70mm Backset Deadbolt C

## Deadbolt Double Cylinder - 127mm, 332

*includes:*

- 2 x Cylinder Escutcheons A
- 127mm Backset Deadbolt D

### Note

Deadbolt cylinders are 6-pin, C4 profile

## Deadbolt Rebate Kit, 342

*includes:*

- Rebate Packer E
- Rebate Deadbolt Strike F

## Tubular Latch Rebate Kit, 343

*includes:*

- Rebate Packer E
- Rebate Latch Strike G

## Product Finishes

*Finishes Available for Door Knobs, Cylinder Escutcheon and Turn Assembly:  
Refer chant<sup>TM</sup> technical*

*Finishes Available for Strikes:*

Stainless Steel SS  
Bronze Plate\* BP

\*This is a brass / bronze plated finish on stainless steel as an approximate match for bronze packer

*Finishes Available for Rebate Packer:*

Satin chrome plate SCP  
Polished bronze PBZ  
Satin bronze aged SBZA

chant productions limited

chant<sup>TM</sup> in touch

8/136 marua rd, ellerslie  
auckland, new zealand  
tel: + 64 9 526 4048  
fax: + 64 9 526 4049

email: sales@chantproductions.co.nz  
internet: www.chantproductions.co.nz

issue 09/03

©chant productions ltd, 2003