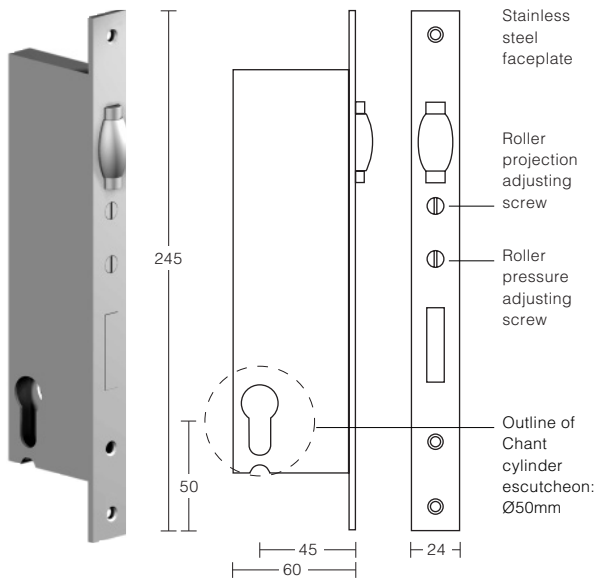


# chant™ mortice roller lock

Mortice Roller Lock  
450



## Mortice Roller Lock

The Mortice Roller Lock and matching Strike Plates have been designed for standard, narrow-stile and rebated doors, particularly for use with *chant*™ curved pull handles where the lock can be placed within the arc of the handle or adjacent to a straight handle.

The lock features adjustment from the faceplate for roller projection and pressure. These adjustments assist in securing large and heavy doors, and doors subject to wind, yet allow free access through the door while unlocked.

Strikes for standard doors  
454a



454b



Strike Packer  
455

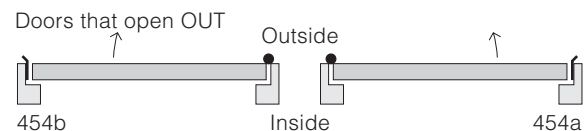
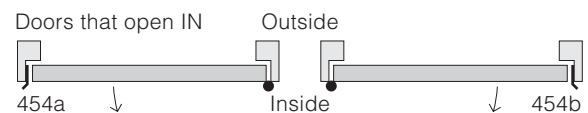


## Strikes 454a / 454b

For standard doors

Features:

- Ramp for roller to roll up when door closing
- Downward ramp for the roller to extend into, securing the door against its backstop
- Integral strike box behind the roller ramp
- Separate strike box for lock bolt
- Strikes manufactured from 316 stainless steel



## Strike Packer 455

For aluminium door frames

- Aluminium 10mm thick
- Natural anodised finish

chant productions limited

chant™  
in touch

8/136 marua rd, ellerslie  
auckland, new zealand  
tel: + 64 9 526 4048  
fax: + 64 9 526 4049  
email: sales@chantproductions.co.nz  
internet: www.chantproductions.co.nz

issue 09/03

©chant productions ltd, 2003

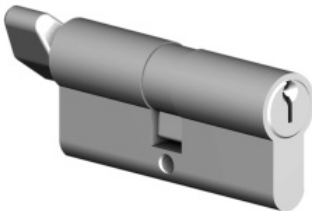
Strikes for rebated doors  
456a



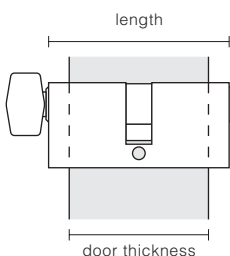
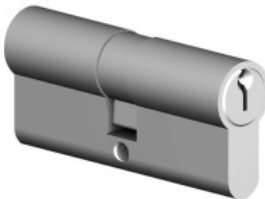
456b



Profile Cylinder and Turn  
460 / 461



Profile Double Cylinder  
462 / 463

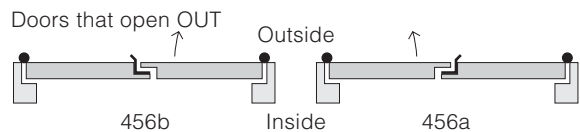
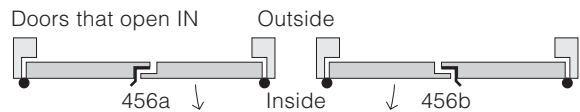


## Strikes 456a / 456b

For rebated doors

Features:

- Ramp for roller to roll up when door closing
- Downward ramp for the roller to extend into, securing the door against its backstop
- Integral strike box behind the roller ramp
- Separate strike box for lock bolt
- Lock packer included with rebate strike set
- Strikes manufactured from 316 stainless steel



## Profile Cylinder and Turn - 5 Pin, 460

Length: 62mm

## Profile Cylinder and Turn - 6 Pin, 461

Length: 70mm

## Profile Double Cylinder - 5 Pin, 462

Length: 62mm

## Profile Double Cylinder - 6 Pin, 463

Length: 70mm

Maximum Door Thickness

403 escutcheon with 5 pin cylinder	46mm
403 escutcheon with 6 pin cylinder	54mm
413 and 423 escutcheons with 5 pin cylinder	42mm
413 and 423 escutcheons with 6 pin cylinder	50mm

## Product Finishes

*Finishes Available for Cylinders*

Satin chrome plate	SCP
Polished brass – Uncoated	PBU
Aged brass	AB*

\*This is an approximate colour match for polished bronze and satin bronze-aged handles and escutcheons

*Finishes Available for Locks and Strikes*

Stainless steel	SS
Bronze plate*	BP

\*This is a brass / bronze plated finish on stainless steel as an approximate match for bronze handles

*To order cylinders, strikes and roller locks example:*

Code	Finish	Quantity
462	SCP	1